

# TAKE ACTION



## Know the hazards.

Educate yourself about potential emergencies in Trout Lake, including wildfires, severe storms, power outages, floods, and lahars.

## Build an emergency kit.

Use the checklist on the back of this brochure to prepare basic supplies. More ideas available at [ready.gov/kit](http://ready.gov/kit)



## Plan and practice evacuation routes.

Refer to the evacuation map inside this brochure. Practice driving these routes in a non-emergency situation.

## Stay informed.

Sign up for Klickitat County Emergency Alerts at [klickitatcounty.org/1235](http://klickitatcounty.org/1235). Connect with neighbors and share resources.



[www.troutlake.org/emergency-handbook](http://www.troutlake.org/emergency-handbook)

Scan to download the Trout Lake Emergency Handbook:

# EMERGENCY KIT CHECKLIST

- Food and water (3 day supply)
- Medications and other essential health items (7-day supply)
- Wallet, credit cards, cash
- Flashlight and batteries
- Matches/lighter, multipurpose tool
- First aid kit and N95 masks
- Sanitation/hygiene items, trash bags
- Important personal documents
- Pet and baby supplies
- Extra car, house, and safe deposit keys
- Extra clothing (hat, gloves, rain gear, sturdy shoes)
- Forest Service and county maps
- Radio and GPS
- Electronic devices chargers, plus backup battery or power supply
- Whistle

## EVACUATION LEVELS

### READY 1

Begin packing your belongings. Monitor media & emergency services.

### SET 2

Be completely prepared to leave. If you have special needs, consider evacuating now.

### GO! 3

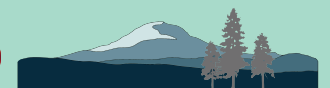
Danger is imminent. Leave immediately. Tell someone where you are headed.

Evacuation orders will be sent by Klickitat County. They may not be issued sequentially (e.g., you could be issued a Level 3 without first being issued Level 1 or 2). **Evacuation will take longer than you think:** do not delay.



# TROUT LAKE

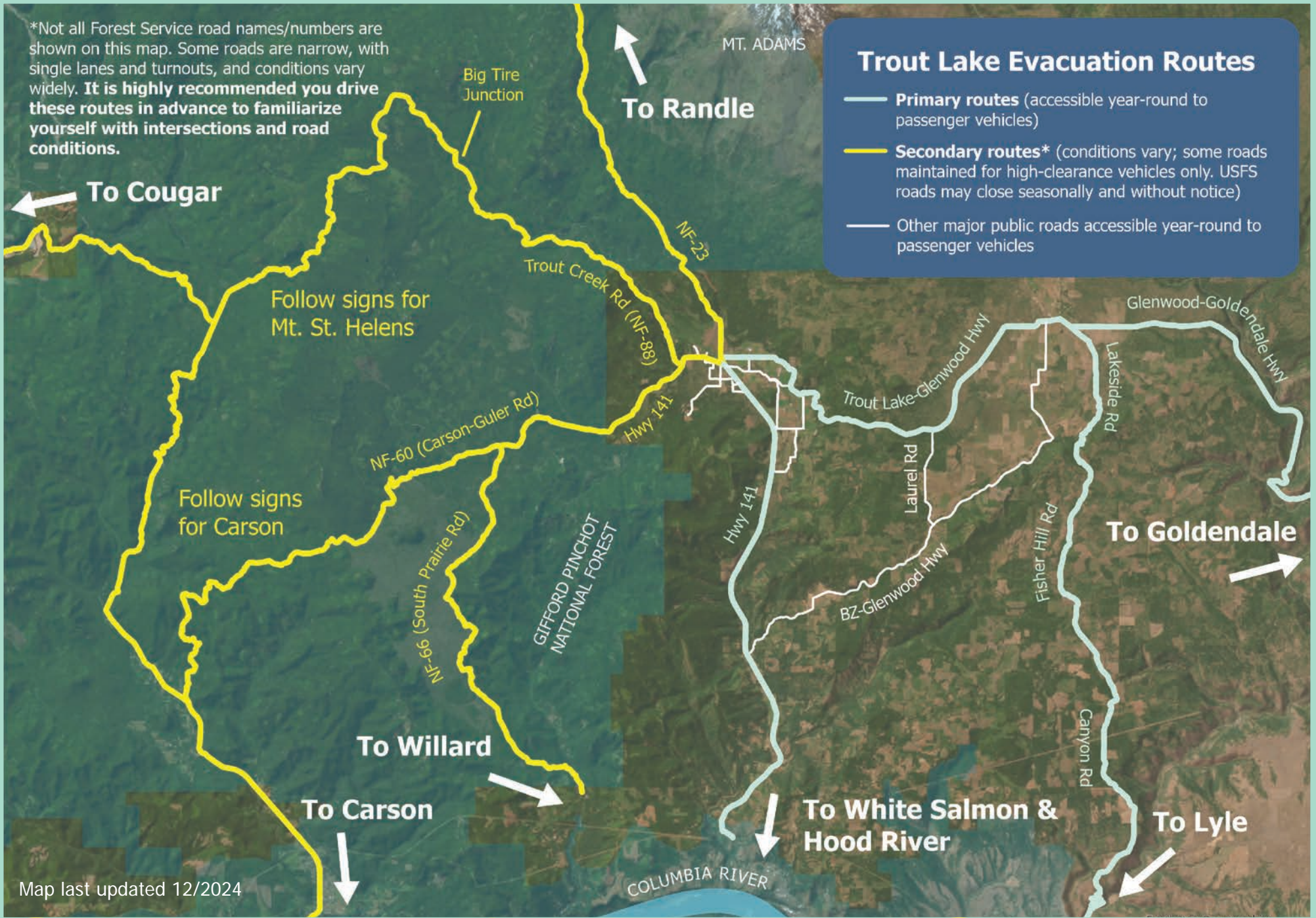
## Evacuation Routes & Emergency Preparedness



Mt. Adams Resource Stewards

[www.mtadamsstewards.org/fact](http://www.mtadamsstewards.org/fact)

\*Not all Forest Service road names/numbers are shown on this map. Some roads are narrow, with single lanes and turnouts, and conditions vary widely. **It is highly recommended you drive these routes in advance to familiarize yourself with intersections and road conditions.**



## Trout Lake Evacuation Routes

- **Primary routes** (accessible year-round to passenger vehicles)
- **Secondary routes\*** (conditions vary; some roads maintained for high-clearance vehicles only. USFS roads may close seasonally and without notice)
- Other major public roads accessible year-round to passenger vehicles

Map last updated 12/2024



This map is intended only to show general options for evacuation. Follow incident-specific recommendations provided by emergency personnel.



Cell coverage can be spotty to non-existent. Bring a map and download driving directions before leaving. Share routes with out-of-area contacts.



Test out these routes in a non-emergency situation and know how long they take. Do not delay evacuation!